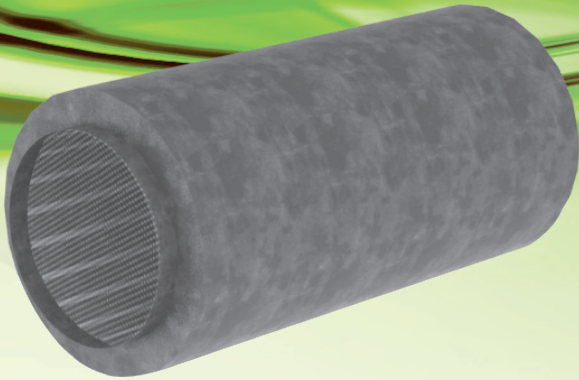


SLR-C & SLR-CH Circular Silencers



ASLI Circular Silencers (SLR-C/SLR-CH) is designed to reduce airborne noise from ventilation fan. They are widely used to cut down noises from equipment in HVAC fields. ASLI circular silencer can be easily mounted directly to equipment without adaptor, which improves its competency in the market. Its negligible pressure drop is another advantages of ASLI circular silencer.

Materials

Outer casing : 1.0mm-1.2mm thickness galvanized steel
Baffle : 0.5mm-0.7mm perforated galvanized steel
Infill : Acoustic composite

Surface Finish

Mill galvanized as standard.
 Painting is available upon request.

Connection Joint

Customized flanged joint.

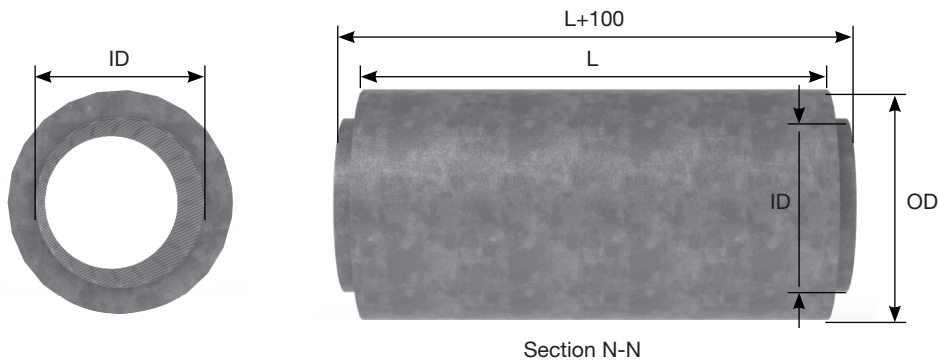
Nominal Length *Unit : mm*

SLR-C : Same as diameter of silencer.
SLR-CH : Double of diameter of silencer.
Others available upon request

Features

- Specially designed for installation friendly
- Negligible pressure drop
- Customized flanged joint

SLR-C & SLR-CH Construction Illustration



SLR-C & SLR-CH Insertion Loss *Unit : dB*

Model	Inner Diameter, ID	Outer Diameter, OD	Length, L	Octave Center Frequency Band (Hz)							
	(mm)	(mm)		(mm)	63	125	250	500	1k	2k	4k
SLR-C	300 to 590	ID+150	ID	2	3	5	9	7	7	7	5
SLR-CH			2xID	4	6	8	15	14	13	10	8
SLR-C	600 to 790	ID+150	ID	2	3	6	9	7	6	5	4
SLR-CH			2xID	4	6	10	16	14	11	9	8
SLR-C	800 to 1390	ID+200	ID	3	4	7	9	7	6	5	4
SLR-CH			2xID	5	8	13	17	14	11	8	7
SLR-C	1400 to 2400	ID+300	ID	3	5	8	8	6	5	4	3
SLR-CH			2xID	6	10	16	16	11	8	7	6

SLR-C & SLR-CH

Circular Silencers

Airflow Generated Sound Power

SLR-C & SLR-CH does not have internal components that would cause generated noise. The results of laboratory testing indicate indiscernible differences between the noise generated by the silencer and the noise generated by the connecting duct.

Pressure Drop

SLR-C & SLR-CH has the similar pressure drop with equivalent length of straight duct. Hence its pressure drop is negligible.

SLR-C & SLR-CH Order Code

Model	Inlet Diameter, ID (mm)
SLR-C	ID300

Example: SLR-C – ID300