

# NASA 8Nm/16Nm 2 point & 3 point On-Off Control Fast-Running Rotary Damper Actuator



ASLI NASA...08/16 16Nm Fast-Running Rotary Damper actuator Series are designed specifically for application into the HVAC market. ASLI high quality damper actuators have been designed for use with fast running air damper, butterfly valve.

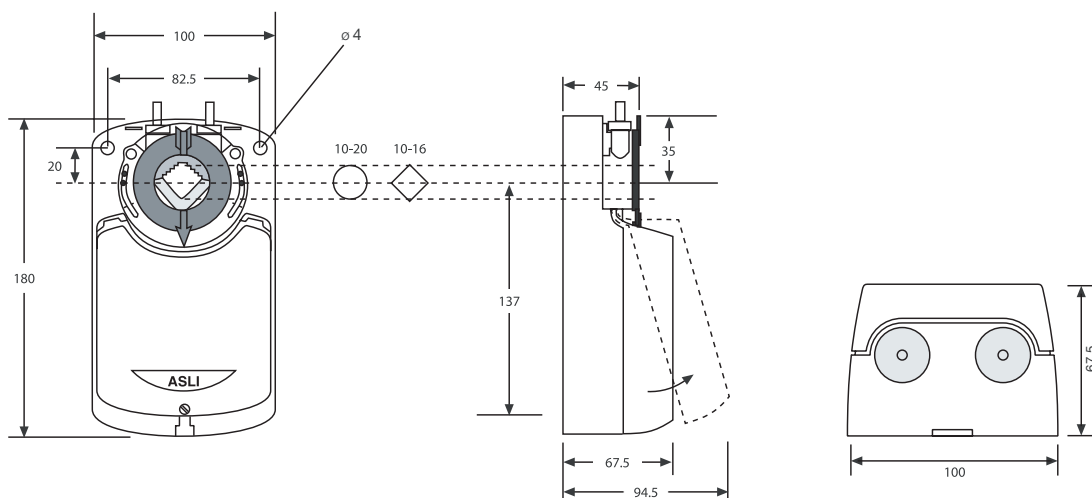
## NASA Model Selection Table

Torque	Running Time	Power Supply	Auxiliary Switches	Model/ Type
8 Nm	8 sec	AC/DC 24 V	No	NASA 1-08
			2 x SPDT	NASA 1-08s
		AC 230 V ± 10%	No	NASA 2-08
			2 x SPDT	NASA 2-08s
16 Nm	16 sec	AC/DC 24 V	No	NASA 1-16
			2 x SPDT	NASA 1-16s
		AC 230 V ± 10%	No	NASA 2-16
			2 x SPDT	NASA 2-16s

## Features

- 2 points and 3 points control
- Shaft dimension Ø 10...20 mm /10...16 mm square
- Universal Spindle Clamp for easy direct mounting
- Anti-rotation bracket provided for stability
- Manual over ride by push button when required
- Adjustable angle of rotation between 0°...90°
- Selectable direction of rotation
- Parallel connection up to 5 actuators
- 2 adjustable SPDT auxiliary switches when requested
- Power saving at end stops
- Actuators with 1 m cable on request

## NASA Actuator Dimensions *Unit : mm*

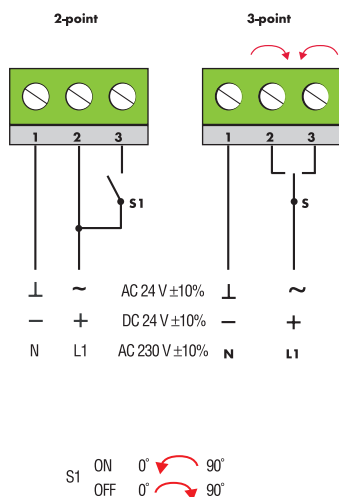


## NASA 8Nm/16Nm 2 point & 3 point On-Off Control Fast-Running Rotary Damper Actuator

### Technical Specification NASA... Series

	NASA1...(S)	NASA2...(S)
Torque	8Nm / 16 Nm	8Nm / 16 Nm
Damper size	1.5 m <sup>2</sup> / 3.0 m <sup>2</sup> / 4.5 m <sup>2</sup>	1.5 m <sup>2</sup> / 3.0 m <sup>2</sup> / 4.5 m <sup>2</sup>
Power supply	AC/DC 24 V	AC 230 V ±10%
Frequency	50...60 Hz	50...60 Hz
<b>POWER CONSUMPTION</b>		
- Operating	7.5 W	11.2 W
- At the end stops	0.5 W	2.5 W
For wire sizing	13 VA	13 VA
Auxiliary switch rating (Amp and Voltage)	3 A / 230 V (for 24 V and 230 V)	3 A / 230 V (for 24 V and 230 V)
Protection class	II (3 (1.5) A / AC 230 V)	II (3 (1.5) A / AC 230 V)
Control signals	2-point and 3-point	2-point and 3-point
Angle of rotation	90° (93° mechanical)	90° (93° mechanical)
Angle limiting	5°...85° in 5° step	5°...85° in 5° step
Weight	1.2 Kg	1.3 Kg
Life cycle	60,000 rotation	60,000 rotation
Sound level	50 dB	50 dB
IP protection	IP54	IP54
Ambient temperature	-20°...+50°C / IEC 721-3-3	-20°...+50°C / IEC 721-3-3
Inventory temperature	-30°...+60°C / IEC 721-3-2	-30°...+60°C / IEC 721-3-2
Ambient humidity	5...95% rH non condensing	5...95% rH non condensing
Maintenance	maintenance free	maintenance free
Impact	Typ 1/EN 60730-1	Typ 1/EN 60730-1
Standardize	89/336/CE	89/336/CE

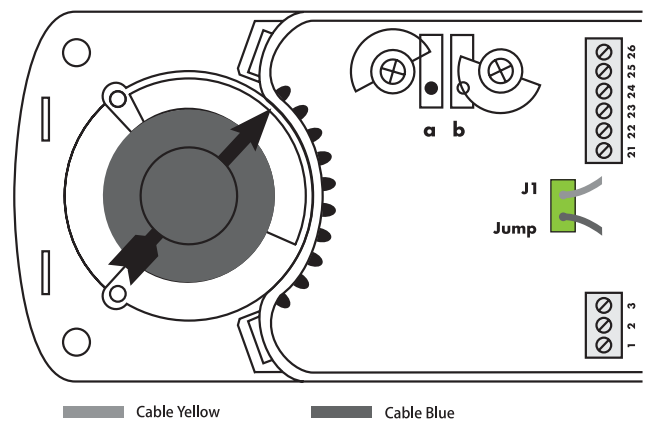
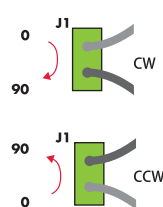
### NASA Wiring Diagram



### Changing Direction of Rotation

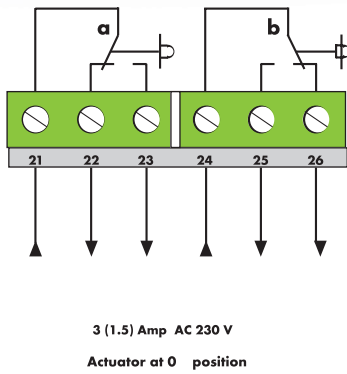
The direction of rotation can be changed by reversing Jumper J1

Factory setting



**NASA 8Nm/16Nm 2 point & 3 point  
On-Off Control Fast-Running Rotary Damper Actuator**

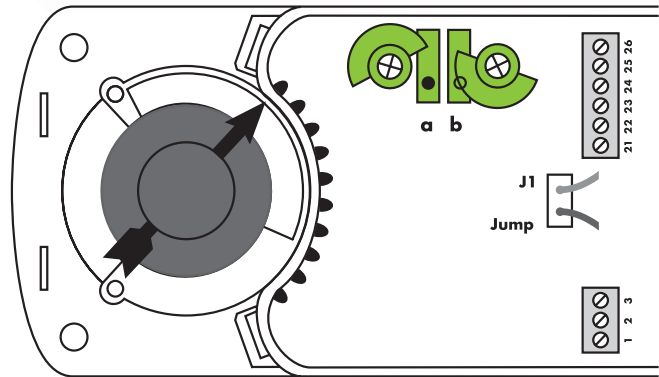
**Auxiliary Switch (s)**



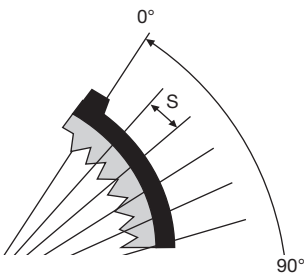
**Auxiliary Switch Adjustment NASA**

Factory setting  
Switch **a** at 10°  
Switch **b** at 80°

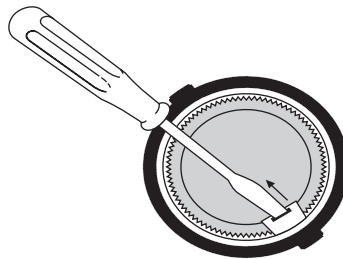
The switching position can be manually changed to any required position by turning the ratchet.



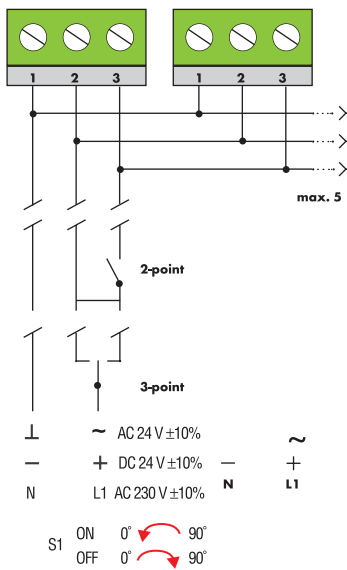
**Angle-of-Rotation Limiting**



**Releasing the Adapter**



**Parallel Connection NASA**



**Parallel connection**

Parallel connection 2 points and 3 points control can be applicable up to 5 actuators.

**Important Remark**

The ASLI NASA/Fast-Running... actuator series can be equipped with a variety of ASLI products, Characterized Ball Valves the NVCB... series, open-closed version, the NMBV... Butterfly Valves series. Consult ASLI representatives or factory for the specific requirements and material selection for your intended application.