

NACM 20Nm Modulating Control Actuator



ASLI damper actuators are especially designed and produced for applications in the HVAC systems with latest Switzerland technology.

It has been developed for use with air damper, butterfly valve, characterized ball valve and globe valve with the use of special adapter.

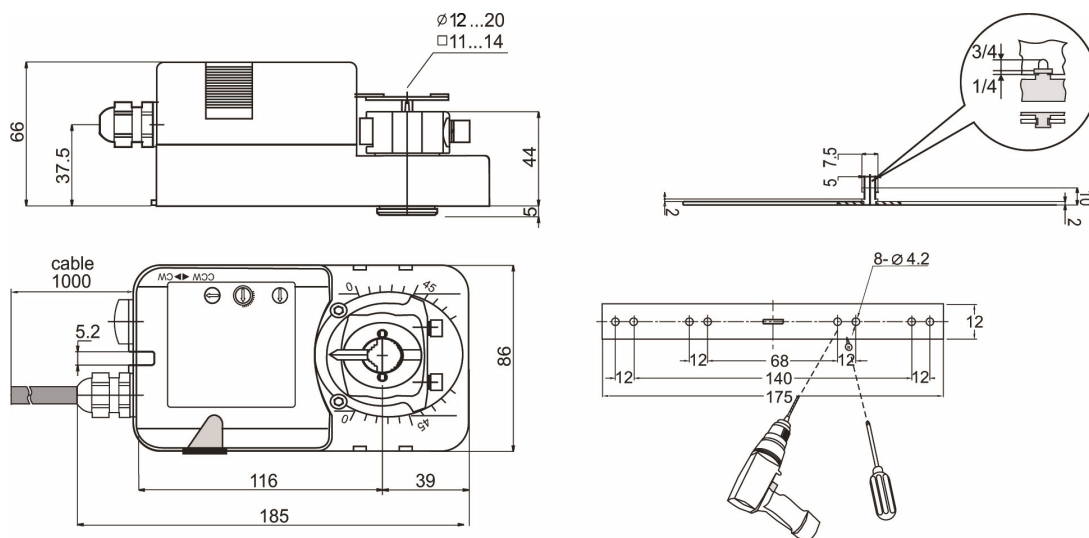
Features

- Torque 20 Nm
- Damper neck size 4.0 m²
- Power supply AC/DC 24V and AC 230V
- Universal Adapter Ø12 to 20 mm round / 11 to 14 mm square
- Manual over-ride push button when required.
- Selectable direction of rotation CW/CCW
- 2 adjustable SDPT auxiliary switch when requested
- Actuator with 1m cable connection

NACM 20Nm Model Selection Table

Torque	Running Time	Power Supply	Auxiliary Switches	Model/Type
20 Nm	70...120 sec	AC/DC 24 V	No	NACM 1.1-20
			2 x SPDT	NACM 1.1-20S
20 Nm	70...120 sec	AC 230V	No	NACM 2.2-20
			2 x SPDT	NACM 2.2-20S

NACM 20Nm Dimensions Unit : mm



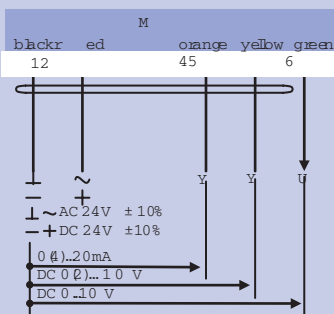
NACM 20Nm Modulating Control Actuator

NACM 20Nm Technical Specification

	NACM 1.1 ...20 (S)	NACM 2.2 ...20 (S)
Torque	20Nm	
Damper size	4.0 m ²	
Power supply	AC/DC 24 V ± 10%	AC 230 V ± 10%
Frequency	50...60 Hz	
POWER CONSUMPTION		
- Operating	8.0 W	
- At the end stops	2.0 W	
For wire sizing	8.0 VA	
Auxiliary Switches Rating (Amp and Voltage)	3 (1.5) A / 230 V (for 24 V and 230 V)	
Protection Class	II (for 24 V and 230 V)	
Input Controls Signal 4/5	0(4)...20mA or DC 0(2)...10V	DC 0(2)...10V
Input Controls Signal 6	DC 0(2)...10V	
Angle of Rotation	90° (95° mechanical)	
Angle limiting	5°...85° in 5° step	
Weight	1.2 Kg	
Life cycle	60,000 rotation	
Sound level	Below 45 dB	
IP protection	IP54	
Ambient Temperature	-20°...50° as per IEC 721-3-3	
Ambient Humidity	5...95% RH	
Inventory Temperature	+70° as per 721-3-2	
Maintenance	Maintenance free	
EMC	CE and ISO 9000 EN / EEC... Requirements	

NACM 20Nm Wiring Diagram

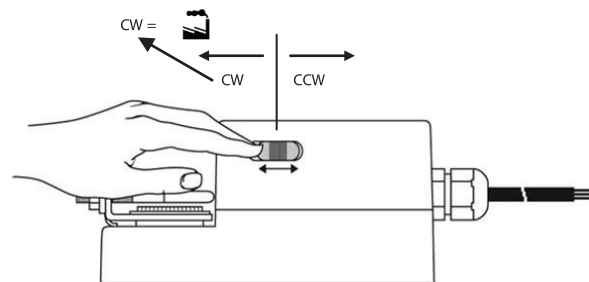
Wiring Diagram NACM 1.1...(S)
Power Supply AC/DC 24 V



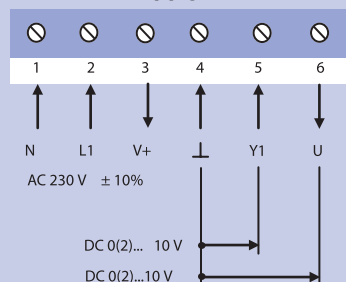
Changing Direction of Rotation NACM 1.1...(S1)

Factory-set CW!

The direction of rotation can be changed by pushing the CW/CCW switch on the actuator's housing.



Wiring Diagram NACM2.2....(S)
Power Supply AC 230V



Adjusting control signals NACM1.1... (S)

Control Signal5 DC 0...10V
Input Resistance Ri 100 k Ohm
Factory default setting

Control Signal 5 DC 2...10V
Input Resistance Ri 500 Ohm
On Request

NACM 20Nm Modulating Control Actuator

NACM 20Nm Wiring Diagram

Parallel connection

Remark

When NACM... (S1) actuators operate in parallel, the output signal U = DC 0...10 V (terminal 6) of the master actuator must be connected to terminal 5 of the next slave actuator.

The power consumption must be observed.

Auxillary Switches

NACM 20Nm Installation / Mounting Instruction

